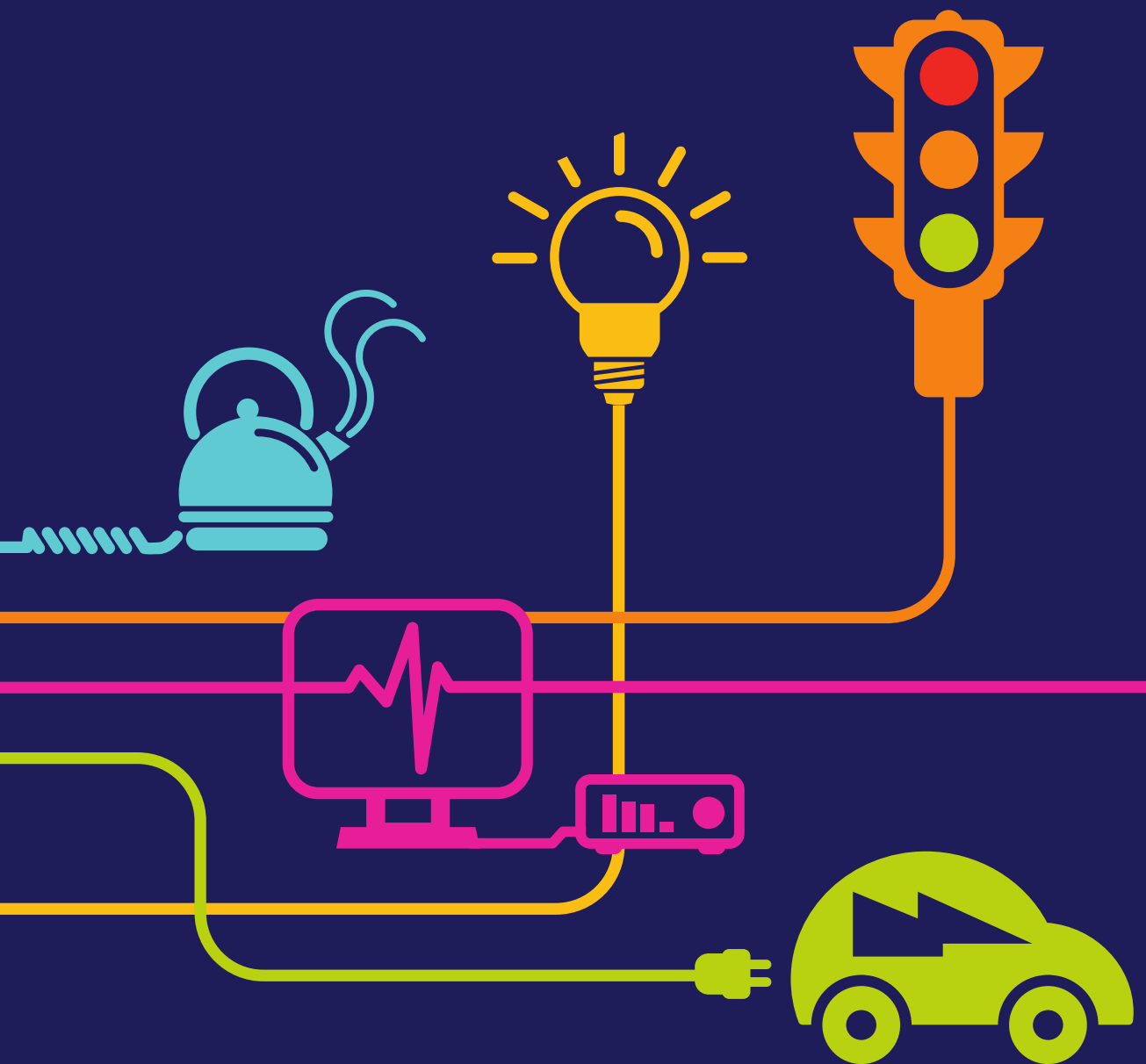


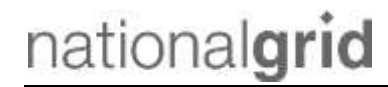
# DOCUMENT 5.29 (Part 4 of 6)

## Photomontages

National Grid (North Wales Connection Project)

*Regulation 5(2)(a) of the Infrastructure Planning  
(Applications: Prescribed Forms and Procedure) Regulations 2009*





# **North Wales Connection Project**

## **Volume 5**

### **Document 5.29 Photomontages (4 of 6)**

National Grid  
National Grid House  
Warwick Technology Park  
Gallows Hill  
Warwick  
CV34 6DA

Final September 2018

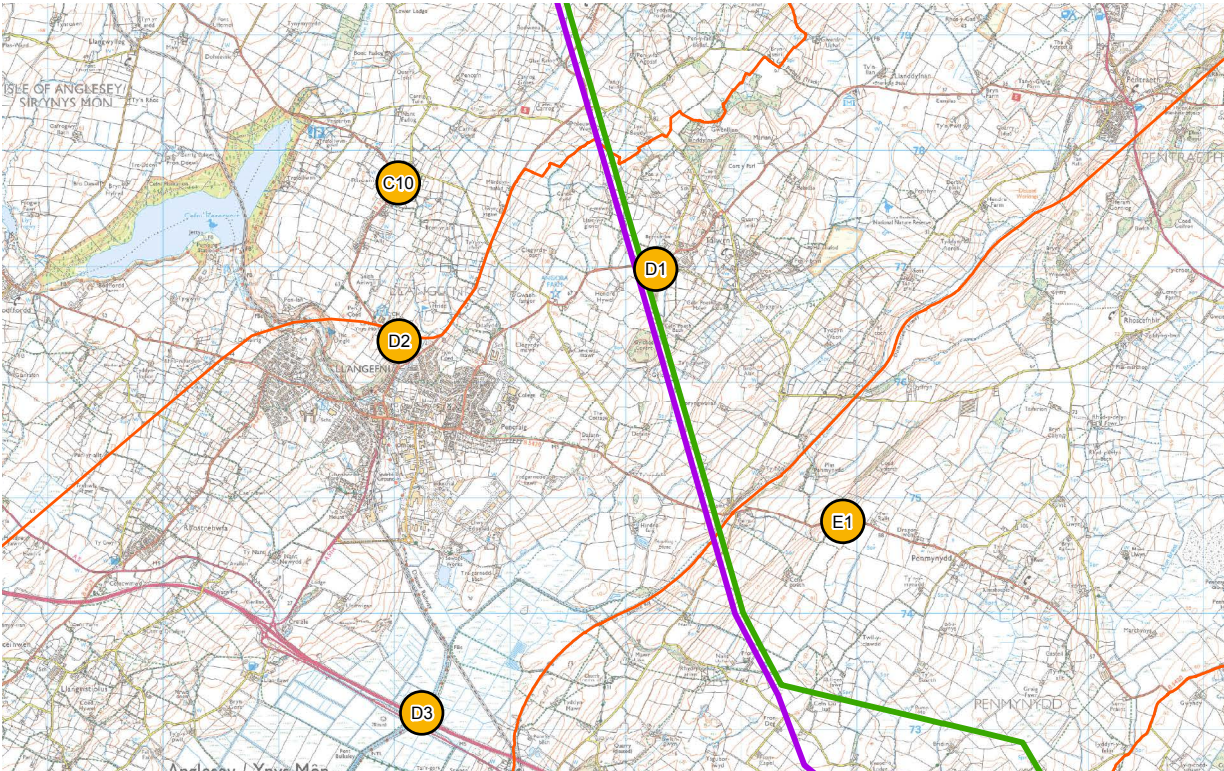
Document Control			
Document Properties			
Organisation		Gillespies	
Author		Helen Johnson	
Approved by		Sarah Gibson	
Title		Photomontages (4 of 6)	
Document Reference		Document 5.29	
Version History			
Date	Version	Status	Description/Changes
September 2018	Rev A	Final	Final for submission

## Section D

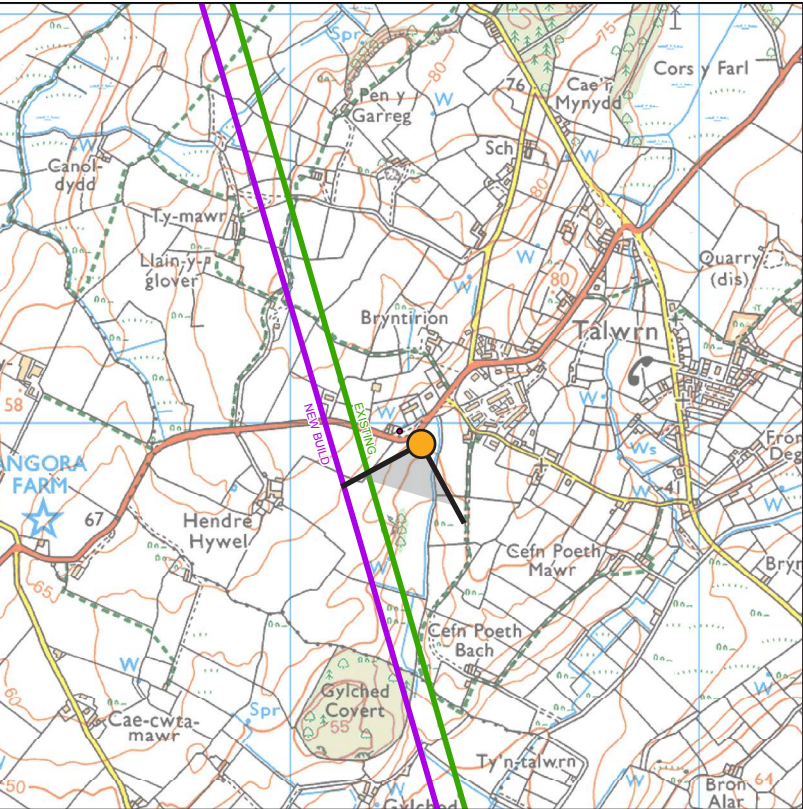
Ref	Title	VP Ref *
D1	View from layby off the B5109 at Talwrn	VP-4/03
D2	View from B5111 north of Llangefni near Oriel Ynys Mon	VP-4/06
D3	View from PRoW by the A55 within Malltraeth Marsh SLA	VP-4/13

\* VP Ref refers to the viewpoint reference for the Viewpoint Assessment (**Document 5.8.2.2**) where the wireframe and further information can be found on this photomontage location

### Location Plan







Background Mapping information has been reproduced from the Ordnance Survey map by permission of Ordnance Survey on behalf of The controller of Her Majesty's Stationery Office. ©Crown Copyright Ordnance Survey. National Grid Electricity - 100024241. National Grid Gas - 100024886.



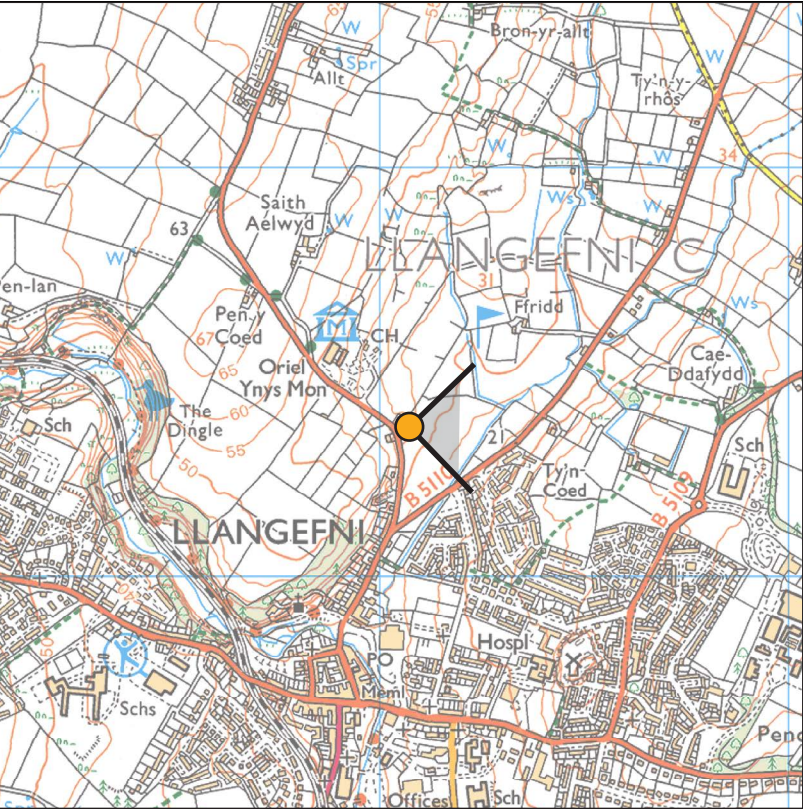
Grid Reference:	248268, 376981
Elevation:	58.2 m
Viewer Height:	1.5 m
Date & Time of Photograph:	8th March 2017 11.23
Horizontal Field of View:	90°
To be viewed at a comfortable arm's length, principal distance when page printed at 841 mm x 297 mm:	400 mm
Camera & Lens:	Canon SLR & 50 mm lens

**Project Title:**  
North Wales Connection Project

**Photomontage Title:**  
Viewpoint D1: View from layby off the B5109 at Talwrn (Option A & B are identical from this location)

**Note:** These photomontages represent the information provided on the Works Plans (**Document 4.4**) and the and Indicative Pylon Schedule (**Document 5.3.2.1**)





Background Mapping information has been reproduced from the Ordnance Survey map by permission of Ordnance Survey on behalf of The Controller of Her Majesty's Stationery Office. ©Crown Copyright Ordnance Survey. National Grid Electricity - 100024241. National Grid Gas - 100024886.



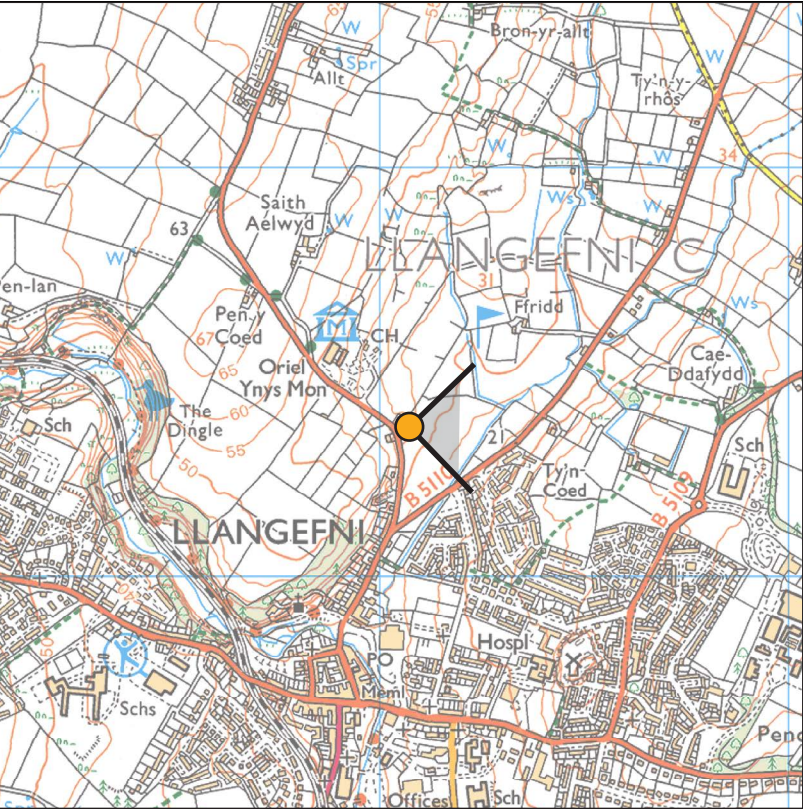
Grid Reference:	246049, 376359
Elevation:	31.7 m
Viewer Height:	1.5 m
Date & Time of Photograph:	1st Nov 2016 15.44
Horizontal Field of View:	90°
To be viewed at a comfortable arm's length, principal distance when page printed at 841 mm x 297 mm:	400 mm
Camera & Lens:	Canon SLR & 50 mm lens

**Project Title:**  
North Wales Connection Project

**Photomontage Title:**  
Viewpoint D2: View from B5111 north of Llangefni near Oriel Ynys Mon (Option A)

**Note:** These photomontages represent the information provided on the Works Plans (**Document 4.4**) and the and Indicative Pylon Schedule (**Document 5.3.2.1**)





Background Mapping information has been reproduced from the Ordnance Survey map by permission of Ordnance Survey on behalf of The Controller of Her Majesty's Stationery Office. ©Crown Copyright Ordnance Survey. National Grid Electricity - 100024241. National Grid Gas - 100024886.



Grid Reference:	246049, 376359
Elevation:	31.7 m
Viewer Height:	1.5 m
Date & Time of Photograph:	1st Nov 2016 15.44
Horizontal Field of View:	90°
To be viewed at a comfortable arm's length, principal distance when page printed at 841 mm x 297 mm:	400 mm
Camera & Lens:	Canon SLR & 50 mm lens


**Project Title:**  
North Wales Connection Project

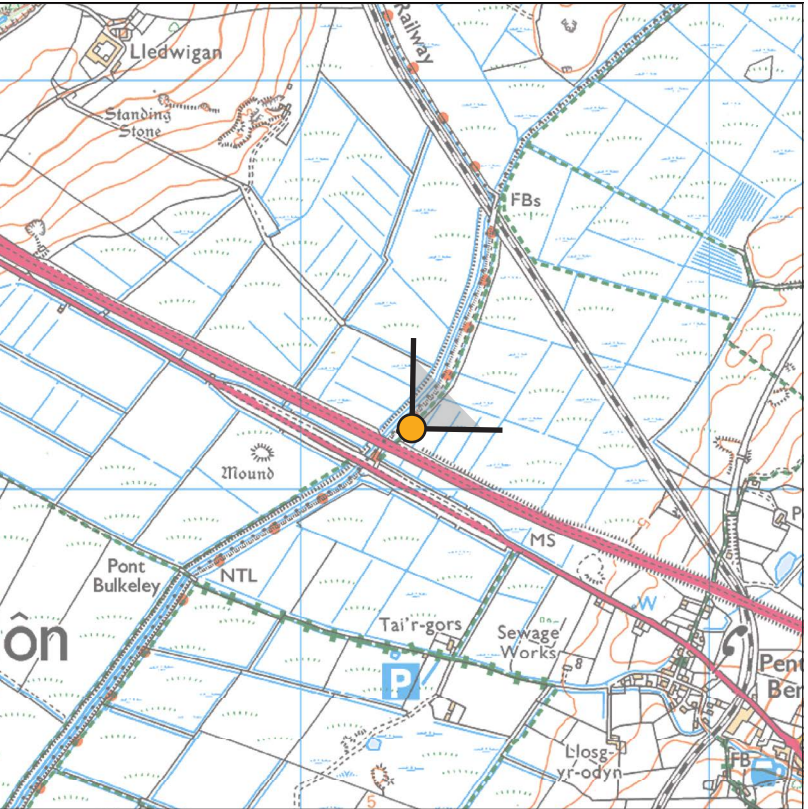
**Photomontage Title:**  
Viewpoint D2: View from B5111 north of Llangefni near Oriel Ynys Mon (Option B)

**Note:** These photomontages represent the information provided on the Works Plans (**Document 4.4**) and the and Indicative Pylon Schedule (**Document 5.3.2.1**)









Background Mapping information has been reproduced from the Ordnance Survey map by permission of Ordnance Survey on behalf of The controller of Her Majesty's Stationary Office. ©Crown Copyright Ordnance Survey. National Grid Electricity - 100024241. National Grid Gas - 100024886.



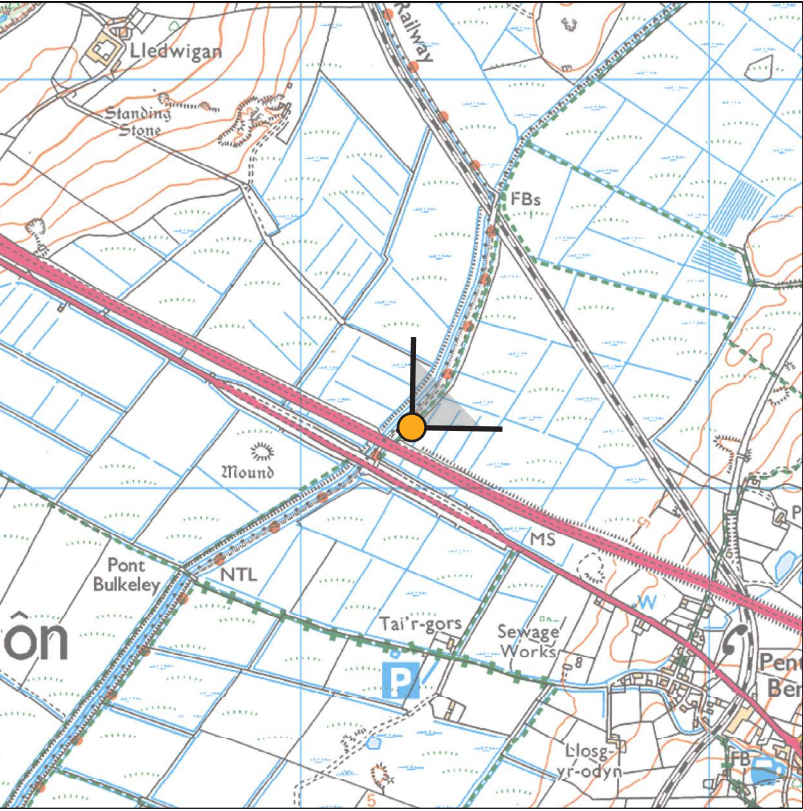
Grid Reference:	246243, 373142
Elevation:	3 m
Viewer Height:	1.5 m
Date & Time of Photograph:	25th January 2017 14.44
Horizontal Field of View:	90°
To be viewed at a comfortable arm's length, principal distance when page printed at 841 mm x 297 mm:	400 mm
Camera & Lens:	Canon SLR & 50 mm lens

**Project Title:**  
North Wales Connection Project

**Photomontage Title:**  
Viewpoint D3: View from PRoW by the A55 within Malttraeth Marsh Special Landscape Area (Option A)

**Note:** These photomontages represent the information provided on the Works Plans (**Document 4.4**) and the and Indicative Pylon Schedule (**Document 5.3.2.1**)





Background Mapping information has been reproduced from the Ordnance Survey map by permission of Ordnance Survey on behalf of The controller of Her Majesty's Stationary Office. ©Crown Copyright Ordnance Survey. National Grid Electricity - 100024241. National Grid Gas - 100024886.



Grid Reference:	246243, 373142
Elevation:	3 m
Viewer Height:	1.5 m
Date & Time of Photograph:	25th January 2017 14.44
Horizontal Field of View:	90°
To be viewed at a comfortable arm's length, principal distance when page printed at 841 mm x 297 mm:	400 mm
Camera & Lens:	Canon SLR & 50 mm lens

**Project Title:**  
North Wales Connection Project

**Photomontage Title:**  
Viewpoint D3: View from PRoW by the A55 within Malttraeth Marsh Special Landscape Area (Option B)

**Note:** These photomontages represent the information provided on the Works Plans (**Document 4.4**) and the and Indicative Pylon Schedule (**Document 5.3.2.1**)